

## WiFi PIR motion sensor



\*Please read this manual carefully before use and keep it for future reference

### Parameters:

USB input voltage: DC5V/ 2A (USB cannot be used with dry battery, only rechargeable battery)

Battery : DC3V LR03\*2

Standby current :  $\leq 75\mu\text{A}$

Alarming current :  $\leq 60\text{mA}$

Low-voltage notification :  $\leq 2.2\text{V}$

WiFi: 802.11b/g/n

Detection distance : 6M

Detection angle : 360°ceiling –installation

Installation method : ceiling /wall

Working temperature : -10-50°C

Working humidity :  $\leq 95\%\text{RH}$

1

1. Download “Tuyasmart” by iOS or Google play store, or scan below QR code to download.

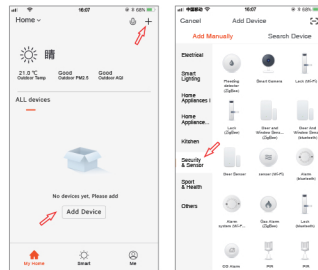


iOS/Android

2. Registering a Tuya account and log-in it.

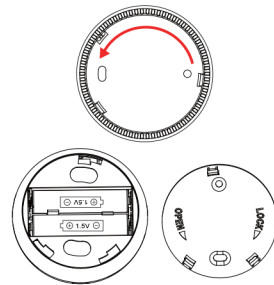
2

3. Click “+” on the top of right corner at home page, choose “Security&Sensors” then find “Sensor(Wi-Fi)” to add device.



3

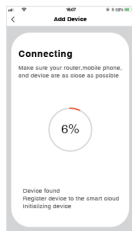
4. Counter clock wise to open back cover and insert batteries.



4

5. There are two methods to connect network.  
5.1 EZ Mode (Default mode ).

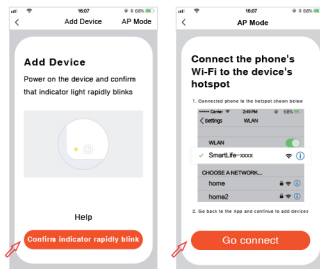
Press the “RESET” for more than 5 seconds by a pin. when indicator flashes quickly, then choice Wifi(2.4GHz) and input password to connect network by APP.



5

5.2 AP Mode

Press the “RESET” for more than 5 seconds by a pin. when indicator flashes quickly, press 5 seconds again, when indicator flashes slowly, then choice Wifi(2.4GHz) and input password, and choice “AP Mode” on the top of right corner, click “Next” into wifi list page to choose “Smartlife\_XXXX” to connect network.

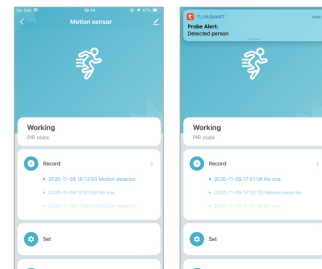


7

6. After connected network, please testing it and mind following points.

※ Please go away from device for more 30 seconds, after that, move body near device to test, indicator light on, and received message by App means testing successful.

※ If someone always movement in detection area of PIR sensor, it will detect one times only.



9